

W27IAD3S-MRA1FP

27" Intel® Core™ i5-1335U Flat PCAP ECDIS Marine Panel PC



KEY FEATURES

- 27" 1920 x 1080 resolution with projective capacitive multi-touch screen
- Edge-to-edge narrow bezel design and fanless cooling system, Flat PCAP ECDIS Marine Panel PC
- Color calibrated for ECDIS compliance (Optional)
- Capacitive touch keys for quick function access and display control
- Support ECDIS DAY, DUSK, and NIGHT mode switching
- Optional 4 x COM port (NMEA 0183 protocol) 422/485 switchable via software
- Meet the requirements of industrial marine standards, including IEC60945 4th Edition, DNV-CG-0339, IACS E10
- Support capacitive touch key lock / touchscreen lock function

INTRODUCTION

Winmate ECDIS Marine Panel PC Series offers advanced functionality and reliability for maritime applications, available in sizes from 10.1" to 27". Designed with an edge-to-edge narrow bezel and a fanless cooling system, these panel PCs provide a sleek, durable solution for harsh marine environments. Featuring capacitive touch keys for quick function access, support for DAY, DUSK, and NIGHT mode switching, and optional NMEA 0183 protocol support, this series ensures seamless navigation and operational efficiency for marine vessels and control rooms.

OVERVIEW

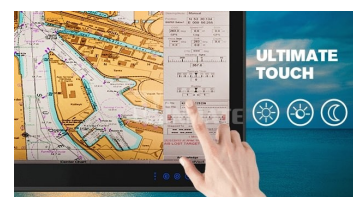


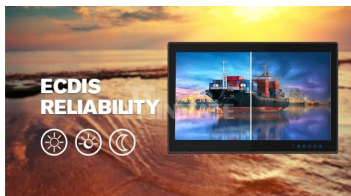
Certified Marine Computing Solutions

Winmate's ECDIS marine panel pcs are certified to meet DNV-CG-0339, IEC60945, and IACS-E10 standards, ensuring compliance with international marine regulations. Rigorous in-house testing guarantees they perform reliably in harsh maritime environments.

Effortless Control with Marine Panel PC

To enhance operator convenience in industrial settings, Winmate's marine ECDIS panel pc series has optimized the six key OSD button for seamless access to DAY/DUSK/Night Mode. This improvement simplifies operation, removing complexity and allowing quick access to the central control on the front panel.





Precision Color Calibration for Marine Navigation

Winmate calibrates color settings according to the IEC 61174 ECDIS Standard, ensuring accurate color representation. This meticulous process guarantees the reliability of color panel pc, which is crucial for maritime navigation.

Sleek and Sturdy Marine Workstations

The true-flat, edge-to-edge design provides a slim and elegant appearance, surpassing standard industrial marine computers with rugged construction, fanless operation, powerful performance, and flexible mounting options.



Comprehensive Marine Connectivity

Extensive connectivity options include Ethernet LAN, USB2.0, USB3.0, HDMI, and optional 4-channel isolated digital input and output. The optional COM ports (RS232/422/485) adhere to the NMEA 0183 standard and are software switchable.

SPECIFICATIONS

Display			
Resolution	1920x1080	Size	27.0 inches
Contrast Ratio	3000:1	Panel Brightness	300.0 nits
View Angles	89,89,89,89	Active Area	597.6x336.15 mm
Touch / Glass	Projected Capacitive Multi Touch Screen (AR Coating) AG film (Optional) AR Glass (Optional)		
System Specification			
Processor	Intel® Core™ i5-1335U 3.4GHz(up to 4.60 GHz)	Memory	1 x SO-DIMM, DDR5 4800 MHz, 8GB 16GB (Optional) 32GB (Optional)
Storage	1 x M.2 2280 M-Key NVMe SSD 128GB 256GB (Optional) 512GB (Optional) 1TB (Optional) 2TB (Optional)	Ethernet controller	2 x Intel® Ethernet Controller
Operating System	Windows 11 IoT Enterprise (64 bit) (Optional) Windows 11 Pro 64 bit (Optional) Windows 10 IoT Enterprise (64 bit) (Optional) Linux Ubuntu 22.04(Do not support Wake on Touch) (Optional)	Buzzer	75 dB~80 dB, 2300 Hz, 1m
Environment			
Operating Humidity	5% to 95%	Operating Temperature	-15~55°C
Shock	15G,11ms duration	Vibration	0.7g@DNV-CG-0339 (Class A)
IP rating	IP66 (Front Side)		
Certification			
Certification	CE, FCC		
Mechanical			
Dimension	657.4 x 420.6 x 85.5 mm	Weight	12.8 kg
Mounting	VESA mount Panel mount (Optional)	Enclosure	Anodized Aluminum Bezel
Cooling System	Fanless Design	Cut out	632 x 394 mm
IO Ports			
USB Port	2 x USB3.0 1 x USB2.0 (Optional)	Serial Port	1 x RS232(Default)/422/485 1 x RS232 (Optional)
Video	1 x HDMI (Optional)	Expansion Port	1 x 2.5" Removable 64GB SSD/HDD up to 512GB (Optional)
LAN	2 x RJ45	Front Control	Power Brightness + Brightness - Menu Function Key(Default setting: ECDIS Mode)
Indicator	Day Mode Dusk Mode Night Mode	DIDO	8 Channel Isolated Digital Input/Output (Optional)
NMEA	4 x NMEA 0183 Port (Optional)		

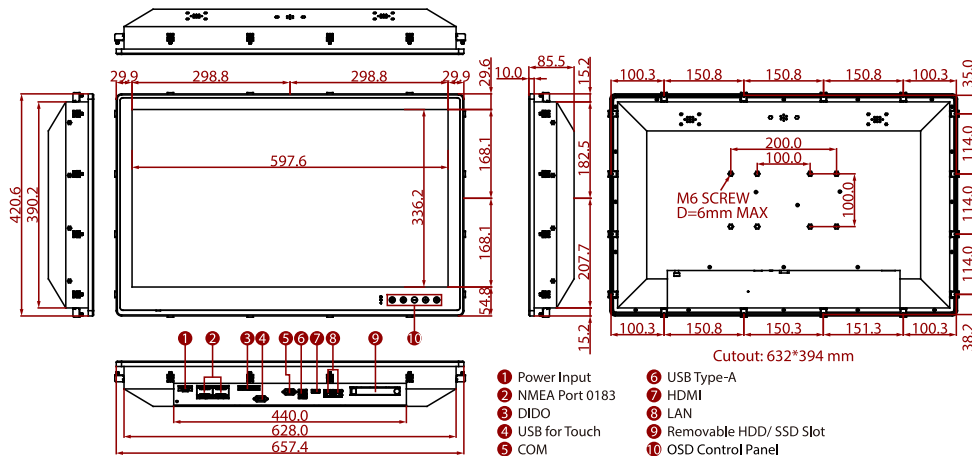
Accessory

Accessory	User Manual 12V AC to DC Adapter (with 3 pin Terminal Block) Power Cord M4 x 30 Black Screws Bolts M4 x 15 Silver Screws Bolts	Optional Accessory	Four 5 Pin Terminal Block 3.81 (Phoenix Type)*For NMEA port (Optional)
-----------	--	--------------------	--

Power

Power Rating	24V DC-in with Isolation (Approval by Certificate) 9~36V DC Input Acceptable	Consumption	75W (Typical)
--------------	---	-------------	---------------

DIMENSIONS UNIT:MM



NOTE

1. This is a simplified drawing and some components are not marked in detail.
2. Only 24V DC has been approved by DNV certification.
3. Please contact our sales representative if you need further product information.
4. All specifications are subject to change without prior notice.
5. The product shown in this datasheet is a standard model. For diagrams that contain customized or optional I/O, please contact the Winmate Sales Team for more information.